

Giving Your Store The Extra Oomph!

Store
Lights

Product Catalog
2021-22

Store Lights



STORE CON

Retail Revolution:
How Times Have Changed? 02-03

Lighting: Why is it at Key Element
in Store Construction & Planning? 04-05

Some Other Ways in Which
Lighting can Impact Your Business 06

IKIO, Making Your Vision of
Store Lighting Come True! 07

How Do We Make Store
Lighting Super Accessible? 08-09

Track Lights 10-24

Downlights 25-56

Pendant Lights 57-65

Cross Reference Guide 66-67

Know More About IKIO 68



Retail Revolution: How Times Have Changed?

While the internet has made shopping more convenient for us, many people still don't prefer buying merchandise without touching, smelling, or experiencing it firsthand.

In fact, according to a recent survey that includes over 1,000 U.S. consumers, it is found that most millennials like to visit brick-and-mortar retail stores far more than their online counterparts. To be more specific, half of the millennials (about 56%) surveyed accepted to have regularly shopped in physical stores at least once a week. Their reason seemed to vary for this — from the benefit of avoiding delivery fees to the convenience of immediate possession of the item to the interactive experience of trying or seeing a product in person.

That's why it is crucial for store owners to ramp up their commercial space, as it can highly influence their brand perception and help them gain more customers in the long run.



Lighting: Why is it a Key Element in Store Construction & Planning?

While lighting during a store construction & planning process is often given the least amount of importance, it in fact contributes majorly in setting the mood and influencing the people's buying decisions. Studies over the years have proved that quality lighting in stores also boost the overall sales of a business.

To better understand this, let's have a look at what Gerry Weber did!



Gerry Weber, a German fashion retailer, installed high-end retail lights in his store to highlight his key merchandise. He realized that the targeted customers felt comparatively more comfortable and spent more time exploring the merchandise. This boosted the sales of his business by an average of 10%.

Some Other Ways in Which Lighting can Impact Your Business



Target Group Appropriate Lighting

The change in intensity, color, color temperature, contrast, and uniformity of the store lights have the ability to grab the attention of your target audience and influence their buying decision.



Revealing Authenticity

Quality lighting in a store with excellent color rendering index and special light spectrums have the ability to reveal the true color and quality of the merchandise.



Adding an Element of Design to the Ceilings

Smart lighting solutions with elegant designs also contribute to enhancing the overall aesthetics of the stores. The extremely large ceiling areas in the retail outlets can be made more presentable with well-designed and exquisite store lights.



Soft Illumination

The modern LED store lights are virtually free from all sorts of harmful emissions such as infrared radiation or UV radiation that can deteriorate the quality of your merchandise.

IKIO, Making Your Vision of Store Lighting Come True!

IKIO's ability to tune into customers' unique needs and deliver industry-forward solutions is what makes us stand out from other brands. We value every client's vision and therefore offer custom-made solutions that perfectly align with it.

Disrupting Limitations in Store Lighting Through **Customized LED Solutions**

Other Brands



Bound By Limitations

V/S

IKIO

No Limitations: **We Customize Everything!**

IKIO offers the best in everything based on your requirements.



*Note: All of these can be customized as per your need.








How Do We Make Store Lighting Super Accessible?

- We source all our components — LEDs, drivers, optics — only from the best vendors.
- We have high-end technology such as Goniometer, helping us deliver solutions without delays.
- We offer thorough assistance with the lighting layout so you can make the best out of our solutions.
- We continuously innovate to develop solutions such as our MARVELA SERIES that brings down the hassle of complete fixture overhauls in stores.
- We are US-based, executing nationwide deliveries in a quick and efficient manner.

Track Lights

Track lights, also called Accent lights, add drama to a space by creating visual interest. Whether a small convenience store or a large department store, IKIO's track lights can be arranged in any space irrespective of the size. They can either be used as spot lights to highlight only a certain section of your store or they can be used to evenly illuminate the whole store.

-  Can be surface mounted, recessed, or suspended.
-  Are highly customizable, low maintenance, and flexible.
-  Allow you to create the desired visual effect.



Amplic

Track Light

Amplic is a technologically advanced LED track light with incorporated electronic gear and chip on board. It also has a high-quality reflector with three different beam spreads. Moreover, the lamp housing of die-cast aluminum for optimal cooling allows the fixture to last longer than its traditional counterparts.



Technical Parameters

Voltage	100 - 277 V AC, 50-60 Hz
Light Source	Osram SOLERIQ S 19
Operating Position	Swiveling Type
Start Time	Instant
Driver	Built in Isolated Driver, Flicker Free
Beam Spread	From Narrow to Wide, From Round to Square And Other Shapes

CRI	Power (W)	CCT (K)	Total Lumen Output (lm)	Finish
>90	20	3000	1900	White

Model/Colors

Available in White.

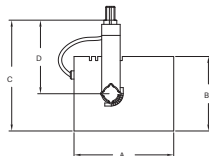


Application Areas

Track Light for Indoor Applications.



Technical Drawing



Beam Spread

Spot		Medium		Flood		Wide Flood	
12°		24°		36°		60°	
ft	ø	ft	ø	ft	ø	ft	ø
3.0	0.72	3.0	1.41	3.0	2.03	3.0	3.15
9.0	2.15	9.0	4.22	9.0	6.09	9.0	9.45
15.0	3.58	15.0	7.04	15.0	10.15	15.0	15.75

Note: Product available in other Kelvin temperatures on request.

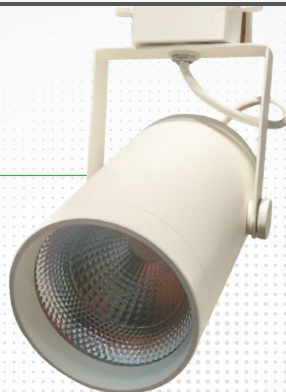
Avis

Track Light

Avis is a technologically advanced LED track light with incorporated electronic gear and chip on board. It also has a high-quality reflector with three different beam spreads. Moreover, the lamp housing of die-cast aluminum for optimal cooling allows the fixture to last longer than its traditional counterparts.

› Technical Parameters

Voltage	120 - 270 V AC, 50-60 Hz
Light Source	LED
Operating Position	360°/60°
Start Time	Instant
Driver	Built in
Optics	Metalized Aluminum Reflector
Dimming	Phase Dim



CRI	Power (W)	CCT (K)	Total Lumen Output (lm)	Finish
80	28 / 36	3000	2604 / 3348	Black / Grey / White
80	28 / 36	4000	2772 / 3568	Black / Grey / White
80	28 / 36	6500	2996 / 3852	Black / Grey / White
90	28 / 36	3000	2464 / 3168	Black / Grey / White
90	28 / 36	4000	2632 / 3384	Black / Grey / White
90	28 / 36	6500	2856 / 3672	Black / Grey / White

› Model/Colors

Available in Black, Grey and White.

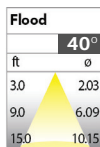


› Application Areas

Track Light for Indoor Applications.



› Beam Spread



Note: 1. Product available in other Kelvin temperatures on request.
2. Wattages can be customized as per the requirement.

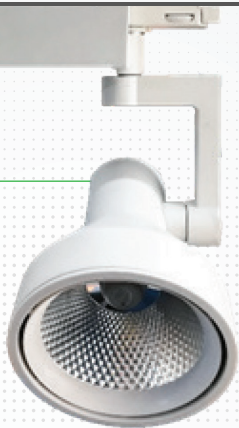
Ornate

Track Light

Ornate is a technologically advanced LED track light with incorporated electronic gear and chip on board. It also has a high-quality reflector with three different beam spreads. Moreover, the lamp housing of die-cast aluminum for optimal cooling allows the fixture to last longer than its traditional counterparts.

Technical Parameters

Voltage	110 - 270 V AC, 50-60 Hz
Light Source	LED
Operating Position	360°/60°
Start Time	Instant
Driver	Built in
Optics	Metalized Aluminum Reflector
Beam Spread	Medium, Flood



CRI	Power (W)	CCT (K)	Total Lumen Output (lm)	Finish
80	30	3000	2000	Black / Grey / White
80	30	4000	2250	Black / Grey / White
80	30	6500	2450	Black / Grey / White
90	30	3000	1920	Black / Grey / White
90	30	4000	2160	Black / Grey / White
90	30	6600	2320	Black / Grey / White

Model/Colors

Available in Black, Grey and White.



Application Areas

Track Light For Indoor Applications.



Beam Spread

Medium			Flood		
24°			36°		
ft	ø		ft	ø	
3.0	1.41		3.0	2.03	
9.0	4.22		9.0	6.09	
15.0	7.04		15.0	10.15	

Note: 1. Product available in other Kelvin temperatures on request.
2. Wattages can be customized as per the requirement.

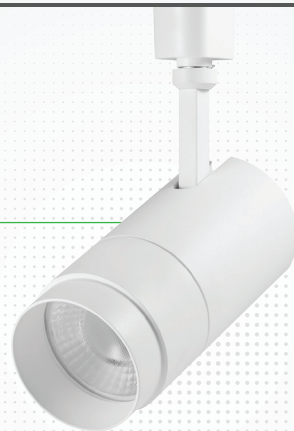
Barrel

Track Light

Barrel is a technologically advanced LED track light with incorporated electronic gear and chip on board. It also has a high-quality reflector with three different beam spreads. Moreover, the lamp housing of die-cast aluminum for optimal cooling allows the fixture to last longer than its traditional counterparts.

> Technical Parameters

Voltage	120 - 270 V AC, 50-60 Hz
Light Source	LED
Operating Position	360°/60°
Start Time	Instant
Driver	Built in
Optics	Metalized Aluminum Reflector
Dimming	Phase Dim



CRI	Power (W)	CCT (K)	Total Lumen Output (lm)	Finish
90	15	2700	1500	Black / White
90	15	3000	1500	Black / White
90	15	4000	1500	Black / White
90	15	6000	1500	Black / White

> Model/Colors

Available in Black and White.

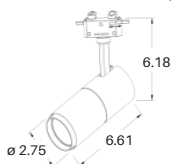


> Application Areas

Track Light for Indoor Applications.



> Technical Drawing



> Beam Spread

Medium 24°		Flood 40°		Wide Flood 60°	
ft	ø	ft	ø	ft	ø
3.0	1.41	3.0	2.03	3.0	3.15
9.0	4.22	9.0	6.09	9.0	9.45
15.0	7.04	15.0	10.15	15.0	15.75

Note: 1. Product available in other Kelvin temperatures on request.
2. Wattages can be customized as per the requirement.

Alem

Track Light

Alem is a technologically advanced LED track light with incorporated electronic gear and chip on board. It also has a high-quality reflector with three different beam spreads. Moreover, the lamp housing of die-cast aluminum for optimal cooling allows the fixture to last longer than its traditional counterparts.



› Technical Parameters

Voltage	100 - 277 V AC, 50-60 Hz
Light Source	Osram SOLERIQ S 19
Operating Position	Swiveling Type
Start Time	Instant
Driver	Stand Alone (included)
Beam Spread	Spot, Medium, Flood, Wide Flood
Dimming	Triac Dimming

CRI	Power (W)	CCT (K)	Total Lumen Output (lm)	Finish
>90	20 / 30	2700	1800 / 2700	Black / White
>90	20 / 30	3000	1900 / 2850	Black / White
>90	20 / 30	4000	2000 / 3000	Black / White
>90	20 / 30	6000	2100 / 3150	Black / White

› Model/Colors

Available in Black and White.

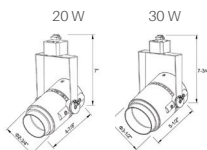


› Application Areas

Track Light for Indoor Applications.



› Technical Drawing



› Beam Spread

Spot			Medium			Flood			Wide Flood		
15°			24°			38°			60°		
ft	ø		ft	ø		ft	ø		ft	ø	
3.0	0.72		3.0	1.41		3.0	2.03		3.0	3.15	
9.0	2.15		9.0	4.22		9.0	6.09		9.0	9.45	
15.0	3.58		15.0	7.04		15.0	10.15		15.0	15.75	

Note: 1. Product available in other Kelvin temperatures on request.

Prime

Track Light

Prime is a technologically advanced LED track light with incorporated electronic gear and chip on board. It also has a high-quality reflector with three different beam spreads. Moreover, the lamp housing of die-cast aluminum for optimal cooling allows the fixture to last longer than its traditional counterparts.



> Technical Parameters

Voltage	100 - 277 V AC, 50-60 Hz
Light Source	Osram SOLERIQ S 19
Operating Position	Swiveling Type
Start Time	Instant
Driver	Stand Alone (included)
Beam Spread	Spot, Medium, Flood
Dimming	Triac Dimming

CRI	Power (W)	CCT (K)	Total Lumen Output (lm)	Finish
>90	20	2700	1800	Black / White
>90	20	3000	1900	Black / White
>90	20	4000	2000	Black / White
>90	20	5000	2100	Black / White

> Model/Colors

Available in Black and White.

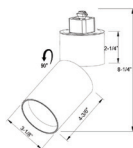


> Application Areas

Track Light for Indoor Applications.



> Technical Drawing



> Beam Spread

Spot	Medium	Flood
11°	24°	36°
ft	ft	ft
3.0	3.0	3.0
0.72	1.41	2.03
9.0	2.15	4.22
2.15	7.04	6.09
15.0	3.58	10.15

Note: 1. Product available in other Kelvin temperatures on request.

Optik

Track Light

Optik is a technologically advanced LED track light with incorporated electronic gear and chip on board. It also has a high-quality reflector with three different beam spreads. Moreover, the lamp housing of die-cast aluminum for optimal cooling allows the fixture to last longer than its traditional counterparts.

› Technical Parameters

Voltage	100 - 277 V AC, 50-60 Hz
Light Source	Osram SOLERIQ S 19
Operating Position	Swiveling Type
Start Time	Instant
Driver	Stand Alone (included)
Beam Spread	Spot, Medium, Flood, Wide Flood (Adjustable)
Dimming	Triac Dimming



CRI	Power (W)	CCT (K)	Total Lumen Output (lm)	Finish
>90	15 / 20	2700	1350 / 1800	Black / White
>90	15 / 20	3000	1425 / 1900	Black / White
>90	15 / 20	4000	1500 / 2000	Black / White
>90	15 / 20	5000	1575 / 2100	Black / White

› Model/Colors

Available in Black and White.

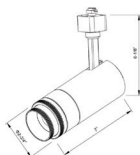


› Application Areas

Track Light for Indoor Applications.



› Technical Drawing



› Beam Spread (Adjustable)

Spot	Medium	Flood	Wide Flood
11°	24°	36°	60°
ft	ft	ft	ft
3.0	3.0	3.0	3.0
0.72	1.41	2.03	3.15
9.0	2.15	4.22	9.45
15.0	3.58	7.04	15.75

Note: 1. Product available in other Kelvin temperatures on request.
2. Ra>97 can be made at extra cost.

Valko

Track Light

Valko is a technologically advanced LED track light with incorporated electronic gear and chip on board. It also has a high-quality reflector with three different beam spreads. Moreover, the lamp housing of die-cast aluminum for optimal cooling allows the fixture to last longer than its traditional counterparts.

> Technical Parameters

Voltage	100 - 277 V AC, 50-60 Hz
Light Source	Osram SOLERIQ S 19
Operating Position	Swiveling Type
Start Time	Instant
Driver	Stand Alone (included)
Beam Spread	Spot, Medium, Flood, Wide Flood
Dimming	Triac Dimming

CRI	Power (W)	CCT (K)	Total Lumen Output (lm)	Finish
>90	30	2700	2700	Black / White
>90	30	3000	2850	Black / White
>90	30	4000	3000	Black / White
>90	30	5000	3150	Black / White

> Model/Colors

Available in Black and White.

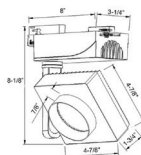


> Application Areas

Track Light For Indoor Applications.
Suit For Big Furniture Using,
Such As Sofa, Bed.



> Technical Drawing



> Beam Spread (Options)

Spot	Medium	Flood	Wide Flood
36°	60°	80°	120°
ft	ft	ft	ft
0	0	0	0
3.0 0.72	3.0 1.41	3.0 2.03	3.0 3.15
9.0 2.15	9.0 4.22	9.0 6.09	9.0 9.45
15.0 3.58	15.0 7.04	15.0 10.15	15.0 15.75

Note: 1. Product available in other Kelvin temperatures on request.
2. 35 W max can be made.

Bolide

Track Light

Bolide is a technologically advanced LED track light with incorporated electronic gear and chip on board. It also has a high-quality reflector with three different beam spreads. Moreover, the lamp housing of die-cast aluminum for optimal cooling allows the fixture to last longer than its traditional counterparts.



› Technical Parameters

Voltage	100 - 277 V AC, 50-60 Hz
Light Source	Osram SOLERIQ S 19
Operating Position	Swiveling Type
Start Time	Instant
Driver	Stand Alone (included)
Beam Spread	Spot, Medium, Flood, Wide Flood (options)
Dimming	Triac Dimming

CRI	Power (W)	CCT (K)	Total Lumen Output (lm)	Finish
>90	30	2700	2700	Black / White
>90	30	3000	2850	Black / White
>90	30	4000	3000	Black / White
>90	30	5000	3150	Black / White

› Model/Colors

Available in Black and White.

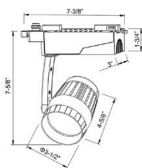


› Application Areas

Track Light For Indoor Applications.
Looks Small And Elegant, More Suitable For
Ladies & Kids' Clothes Shops



› Technical Drawing



› Beam Spread (Options)

Spot	Medium	Flood	Wide Flood
15°	24°	36°	60°
ft 3.0 0.72 9.0 2.15 15.0 3.58	ft 3.0 1.41 9.0 4.22 15.0 7.04	ft 3.0 2.03 9.0 6.09 15.0 10.15	ft 3.0 3.15 9.0 9.45 15.0 15.75

Note: 1. Product available in other Kelvin temperatures on request.

Saurin

Track Light

Saurin is a technologically advanced LED track light with incorporated electronic gear and chip on board. It also has a high-quality reflector with three different beam spreads. Moreover, the lamp housing of die-cast aluminum for optimal cooling allows the fixture to last longer than its traditional counterparts.

Technical Parameters

Voltage	100 - 277 V AC, 50-60 Hz
Light Source	Osram SOLERIQ S 19
Operating Position	Swiveling Type
Start Time	Instant
Driver	Stand Alone (included)
Beam Spread	Spot, Medium, Flood, Wide Flood
Dimming	Triac Dimming

CRI	Power (W)	CCT (K)	Total Lumen Output (lm)	Finish
>90	30 / 55	2700	2700 / 4950	Black / White
>90	30 / 55	3000	2850 / 5225	Black / White
>90	30 / 55	4000	3000 / 5500	Black / White
>90	30 / 55	5000	3150 / 5775	Black / White

Model/Colors

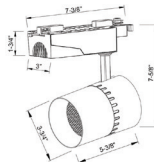
Available in Black and White.



Application Areas

Track Light for Indoor Applications.
The Lighting Part With Strong Design, More
Suitable For Men's Clothes Shops.

Technical Drawing



Beam Spread

Spot	Medium	Flood	Wide Flood
15°	24°	36°	60°
ft	ft	ft	ft
3.0	3.0	3.0	3.0
0.72	1.41	2.03	3.15
9.0	2.15	6.09	9.45
15.0	3.58	10.15	15.75

Note: 1. Product available in other Kelvin temperatures on request.

Ork

Track Light

Ork is a technologically advanced LED track light with incorporated electronic gear and chip on board. It also has a high-quality reflector with three different beam spreads. Moreover, the lamp housing of die-cast aluminum for optimal cooling allows the fixture to last longer than its traditional counterparts.



> Technical Parameters

Voltage	100 - 277 V AC, 50-60 Hz
Light Source	Osram SOLERIQ S 19
Operating Position	Swiveling Type
Start Time	Instant
Driver	Stand Alone (included)
Beam Spread	Spot, Medium, Flood, Wide Flood (Adjustable)
Dimming	Triac Dimming

CRI	Power (W)	CCT (K)	Total Lumen Output (lm)	Finish
>90	20 / 30	2700	1800 / 2700	Black / White
>90	20 / 30	3000	1900 / 2850	Black / White
>90	20 / 30	4000	2000 / 3000	Black / White
>90	20 / 30	5000	2100 / 3150	Black / White

> Model/Colors

Available in Black and White.

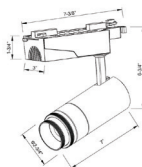


> Application Areas

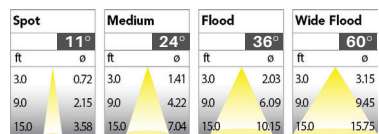
Track Light for Indoor Applications.



> Technical Drawing



> Beam Spread (Adjustable)



Note: 1. Product available in other Kelvin temperatures on request.
2. Ra>97 can be made at extra cost.

Rimin

Track Light

Rimin is a technologically advanced LED track light with incorporated electronic gear and chip on board. It also has a high-quality reflector with three different beam spreads. Moreover, the lamp housing of die-cast aluminum for optimal cooling allows the fixture to last longer than its traditional counterparts.

› Technical Parameters

Voltage	100 - 277 V AC, 50-60 Hz
Light Source	Osram SOLERIQ S 19
Operating Position	Swiveling Type
Start Time	Instant
Driver	Stand Alone (included)
Beam Spread	From Narrow To Wide, From Round To Square And other Shapes
Dimming	Triac Dimming, Local Dimming



CRI	Power (W)	CCT (K)	Total Lumen Output (lm)	Finish
>90	20 / 30	2700	1600 / 2400	Black
>90	20 / 30	3000	1700 / 2550	Black
>90	20 / 30	4000	1800 / 2700	Black
>90	20 / 30	5000	1900 / 2850	Black

› Model/Colors

Available in Black.

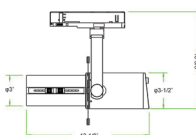


› Application Areas

Track Light for Indoor Applications.

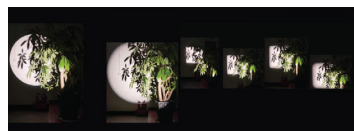


› Technical Drawing



› Beam Spread / Shapes

15° to 60° (Adjustable)



Note: 1. Product available in other Kelvin temperatures on request.
2. Ra>97 can be made at extra cost.

Trang

Track Light

Trang is a technologically advanced LED track light with incorporated electronic gear and chip on board. It also has a high-quality reflector with three different beam spreads. Moreover, the lamp housing of die-cast aluminum for optimal cooling allows the fixture to last longer than its traditional counterparts.

› Technical Parameters

Voltage	100 - 277 V AC, 50-60 Hz
Light Source	Osram SOLERIQ S 19
Operating Position	Swiveling Type
Start Time	Instant
Driver	Stand Alone (included)
Beam Spread	Spot, Medium, Flood, Wide Flood
Dimming	Triac Dimming



CRI	Power (W)	CCT (K)	Total Lumen Output (lm)	Finish
>90	15 / 20 / 30	2700	1350 / 1800 / 2700	Black / White
>90	15 / 20 / 30	3000	1425 / 1900 / 2850	Black / White
>90	15 / 20 / 30	4000	1500 / 2000 / 3000	Black / White
>90	15 / 20 / 30	5000	1575 / 2100 / 3150	Black / White

› Model/Colors

Available in Black and White.

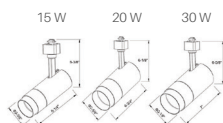


› Application Areas

Track Light for Indoor Applications.



› Technical Drawing



› Beam Spread

Spot	Medium	Flood	Wide Flood
15°	24°	38°	60°
ft	ft	ft	ft
3.0	3.0	3.0	3.0
0.72	1.41	2.03	3.15
9.0	2.15	4.22	6.09
15.0	3.58	7.04	10.15
			15.75

Note: 1. Product available in other Kelvin temperatures on request.

Downlights

Downlights, also called Ambient lights, help in the overall illumination of a space. Their main function is to illuminate the space to a comfortable level of brightness. These lights cater to almost all kinds of retail spaces and sometimes even commercial spaces.



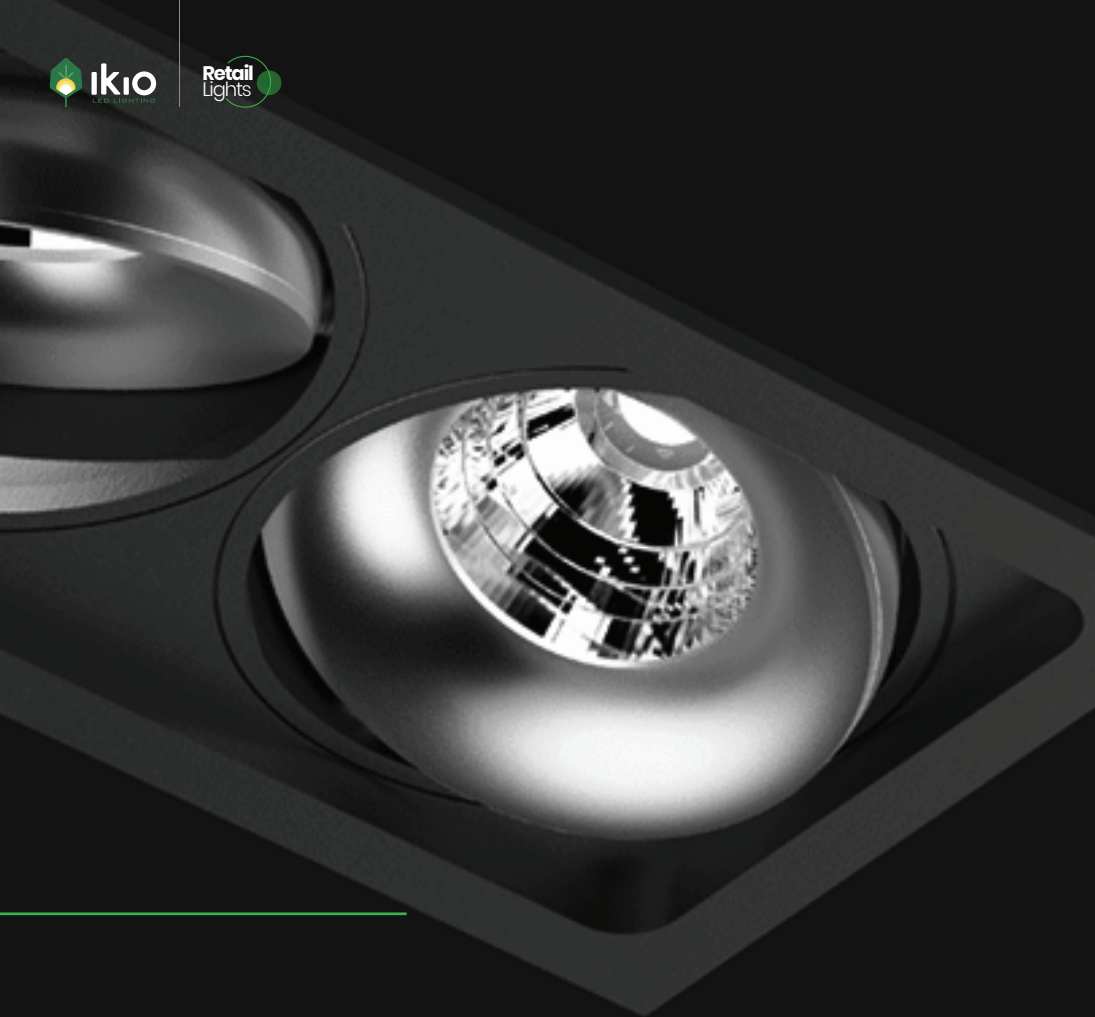
They are installed into a hollow opening in the ceiling



The color temperature of a downlight helps set the ambience.



They barely take any vertical space in the place of installation.



Lucent

Downlight

Lucent, a round LED spot light made of aluminum die cast with high quality powder coated luminaire housing and optimum heat sink. Specular reflector & power grid / global connectors available with isolated LED Driver using Ultra bright CREE COB.



Technical Parameters

Voltage	100 - 277 V AC, 50-60 Hz
Light Source	LED
Operating Position	360°/60°
Start Time	Instant
Driver	Stand Alone (included)
Optics	Metalized Aluminum Reflector
Dimming	0-10 V

CRI	Power (W)	CCT (K)	Total Lumen Output (lm)	Finish
80	25 / 28 / 30	3000	2375 / 2660 / 3040	Black / Grey / White
80	25 / 28 / 30	4000	2500 / 2800 / 3200	Black / Grey / White
80	25 / 28 / 30	6500	2620 / 2940 / 3360	Black / Grey / White
90	25 / 28 / 30	3000	2250 / 2520 / 2880	Black / Grey / White
90	25 / 28 / 30	4000	2375 / 2660 / 3040	Black / Grey / White
90	25 / 28 / 30	6500	2500 / 2800 / 3200	Black / Grey / White

Model/Colors

Available in Black, Grey and White.



Application Areas

Downlight for Indoor Applications.



Technical Drawing



Beam Spread (Options)

Medium	Flood	Wide Flood
24°	40°	60°
ft	ft	ft
3.0	3.0	3.0
9.0	9.0	9.0
15.0	15.0	15.0
1.41	2.03	3.15
4.22	6.09	9.45
7.04	10.15	15.75

Note: 1. LED Driver: IKIO uses own manufactured LED Driver with toughest design, high surge & voltage withstanding capabilities.
2. Product available in other Kelvin temperatures on request.
3. Wattages & Beam spreads can be customized as per the requirement.

Spectro

Downlight

Circular in design, Spectro LED spot light comprises of aluminum die cast with high quality powder coated luminaire housing and optimum heat sink. Available in multiple wattages and beam angle, the luminaire renders greater flexibility in its application for store lighting. It also has a specular reflector & power grid / global connectors available with isolated LED Driver using Ultra bright CREE COB.



Technical Parameters

Voltage	100 - 277 V AC, 50-60 Hz
Light Source	LED
Operating Position	Vertical/Gyro
Start Time	Instant
Driver	Included
Optics	Metalized Aluminum Reflector
Dimming	0-10V

CRI	Power (W)	CCT (K)	Total Lumen Output (lm)	Finish
80	25 / 30 / 36	3000	2075 / 2656 / 2988	Black / Grey / White
80	25 / 30 / 36	4000	2200 / 2816 / 3168	Black / Grey / White
80	25 / 30 / 36	6500	2300 / 2944 / 3312	Black / Grey / White
90	25 / 30 / 36	3000	2000 / 2560 / 2880	Black / Grey / White
90	25 / 30 / 36	4000	2125 / 2720 / 3060	Black / Grey / White
90	25 / 30 / 36	6500	2200 / 2816 / 3168	Black / Grey / White

Model/Colors

Available in Black, Grey and White.

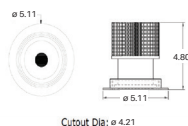


Application Areas

Downlight for Indoor Applications.



Technical Drawing



Beam Spread

Medium	Flood	Wide Flood
24°	40°	60°
ft	ft	ft
3.0	3.0	3.0
1.41	2.03	3.15
9.0	4.22	6.09
15.0	7.04	10.15
		15.75

Note: 1. LED Driver: IKIO uses own manufactured LED Driver with toughest design, high surge & voltage withstanding capabilities.
2. Product available in other Kelvin temperatures on request.
3. Wattages & Beam spreads can be customized as per the requirement.

Orbed

Downlight

Create the desired lighting effect in your stores with IKIO's Orbed, a circular LED spot light made of aluminum die cast with high quality powder coated luminaire housing and optimum heat sink. These properties of the luminaire contribute to its effective functioning for a longer time period. Moreover, available in multiple wattages, color temperatures, finishes, and beam angles, this luminaire offers greater flexibility in its application.



> Technical Parameters

Voltage	110 - 270 V AC, 50-60 Hz
Light Source	LED
Operating Position	Vertical/Fixed
Start Time	Instant
Driver	Included
Optics	Aluminum Reflector
Dimming	0-10 V

CRI	Power (W)	CCT (K)	Total Lumen Output (lm)	Finish
80	40	3000	3320	Black / Grey / White
80	40	4000	3560	Black / Grey / White
80	40	6500	3720	Black / Grey / White
90	40	3000	3120	Black / Grey / White
90	40	4000	3440	Black / Grey / White
90	40	6500	3600	Black / Grey / White

> Model/Colors

Available in Black, Grey and White.

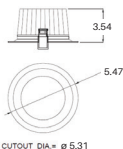


> Application Areas

Downlight for Indoor Applications.



> Technical Drawing



> Beam Spread

Medium 24°			Flood 36°		
ft	ø		ft	ø	
3.0	1.41		3.0	2.03	
9.0	4.22		9.0	6.09	
15.0	7.04		15.0	10.15	

Note: 1. LED Driver: IKIO uses own manufactured LED Driver with toughest design, high surge & voltage withstanding capabilities.
2. Product available in other Kelvin temperatures on request.
3. Wattages & Beam spreads can be customized as per the requirement.

Helm

Downlight

Helm recessed downlight is a cylindrical shaped fixture, that illuminates a store in the most effective manner without being obtrusive. The smart engineering of the luminaire with specular reflector & power grid/ global connectors along with high voltage standing in-house LED driver makes it an ideal choice for lighting your stores.



Technical Parameters

Voltage	110 - 270 V AC, 50-60 Hz
Light Source	LED
Operating Position	Vertical/Retractable
Start Time	Instant
Driver	Included
Optics	Aluminum Reflector
Dimming	0-10 V

CRI	Power (W)	CCT (K)	Total Lumen Output (lm)	Finish
80	25 / 30	3000	2500 / 3000	Black / Grey / White
80	25 / 30	4000	2625 / 3150	Black / Grey / White
80	25 / 30	6500	2750 / 3300	Black / Grey / White
90	25 / 30	3000	2375 / 2850	Black / Grey / White
90	25 / 30	4000	2520 / 3000	Black / Grey / White
90	25 / 30	6500	2660 / 3190	Black / Grey / White

Model/Colors

Available in Black, Grey and White.

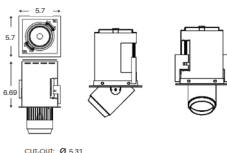


Application Areas

Downlight for Indoor Applications.



Technical Drawing



Beam Spread (Options)

Flood		
		36°
ft		Ø
3.0		2.03
9.0		6.09
15.0		10.15

Note: 1. LED Driver: IKIO uses own manufactured LED Driver with toughest design, high surge & voltage withstanding capabilities.
2. Product available in other Kelvin temperatures on request.
3. Beam spreads can be customized as per the requirement.

Scrawn

Downlight

Scrawn Downlight is a retractable downlight with a fully adjustable system to pull out and swivel. The adjustable head of the luminaire allows you to direct the light where it's required and alternatively can be pushed back to its standard position to offer downward lighting. Available in multiple wattages and beam angles, this luminaire offers greater flexibility in its application.



Technical Parameters

Voltage	110 - 270 V AC, 50-60 Hz
Light Source	LED
Operating Position	Vertical/Retractable
Start Time	Instant
Driver	Included
Optics	Aluminum Reflector
Dimming	0-10 V

CRI	Power (W)	Fixtures	CCT (K)	Total Lumen Output (lm)	Finish
80	25 / 30	x 2	3000	4150 / 4980	Black / Grey / White
80	25 / 30	x 2	4000	4400 / 5380	Black / Grey / White
80	25 / 30	x 2	6500	4600 / 5520	Black / Grey / White
90	25 / 30	x 2	3000	3900 / 4680	Black / Grey / White
90	25 / 30	x 2	4000	4000 / 4800	Black / Grey / White
90	25 / 30	x 2	6500	4600 / 5100	Black / Grey / White

Model/Colors

Available in Black, Grey and White.

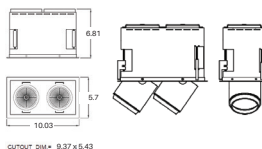


Application Areas

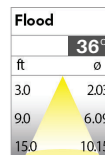
Downlight for Indoor Applications.



Technical Drawing



Beam Spread



Note: 1. LED Driver:- IK10 uses own manufactured LED Driver with toughest design, high surge & voltage withstanding capabilities.
2. Product available in other Kelvin temperatures on request.
3. Beam spreads can be customized as per the requirement.

Opul

Downlight



Opul downlight, a cylindrical shaped adjustable spot light made of aluminum die cast with white powder coating ensures high-durability for the luminaire. Moreover, the downlight comprises of specular reflector & power grid/global connectors available with LED Driver using Ultra bright CREE COB.

Technical Parameters

Voltage	110 - 270 V AC, 50-60 Hz
Light Source	LED
Operating Position	Vertical/Retractable
Start Time	Instant
Driver	Included
Optics	Aluminum Reflector
Dimming	0-10 V

CRI	Power (W)	Fixtures	CCT (K)	Total Lumen Output (lm)	Finish
80	25 / 30	x 3	3000	6225 / 7470	Black / Grey / White
80	25 / 30	x 3	4000	6600 / 7920	Black / Grey / White
80	25 / 30	x 3	6500	6900 / 8280	Black / Grey / White
90	25 / 30	x 3	3000	5850 / 7020	Black / Grey / White
90	25 / 30	x 3	4000	6000 / 7200	Black / Grey / White
90	25 / 30	x 3	6500	6375 / 7650	Black / Grey / White

Model/Colors

Available in Black, Grey and White.

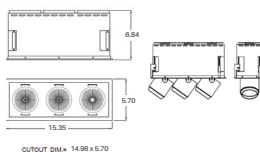


Application Areas

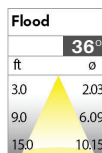
Downlight for Indoor Applications.



Technical Drawing



Beam Spread (Options)

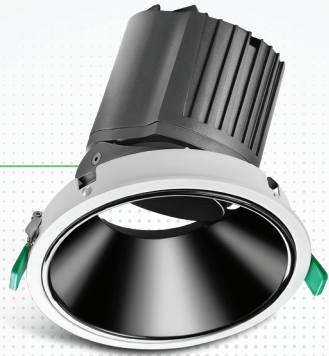


Note: 1. LED Driver:- IKIO uses own manufactured LED Driver with toughest design, high surge & voltage withstanding capabilities.
2. Product available in other Kelvin temperatures on request.
3. Wattages & Beam spreads can be customized as per the requirement.

Elio

Downlight

Elio downlight, a round shaped LED downlight made of aluminum die cast with high quality powder coated luminaire housing and optimum heat sink. Available in multiple wattages, color temperatures, and beam angles, this luminaire offers greater flexibility in its application. Specular reflector & power grid /global connectors available with isolated LED Driver using ultra bright OSRAM COB are some of the highlighting features of this downlight.



› Technical Parameters

Voltage	100 - 277 V AC, 50-60 Hz
Light Source	Osram SOLERIQ S 19
Operating Position	Swiveling Type
Start Time	Instant
Driver	Stand Alone (included)
Optics	Darklight Technology Black, Silver
Dimming	On-Off / Triac / 0-10 V

CRI	Power (W)	CCT (K)	Total Lumen Output (lm)	Finish
>90	12 / 20 / 30 / 35	3000	1020 / 1700 / 2550 / 2975	Black / White
>90	12 / 20 / 30 / 35	4000	1068 / 1780 / 2670 / 3115	Black / White
>90	12 / 20 / 30 / 35	5000	1104 / 1840 / 2760 / 3220	Black / White

› Model/Colors

Available in Black and White.

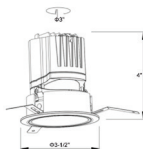


› Application Areas

Downlight For Indoor Applications.
Guest Room, Corridor, Restaurant,
Meeting Room Club, Hall, Hotel Entrance



› Technical Drawing



› Beam Spread (Options)

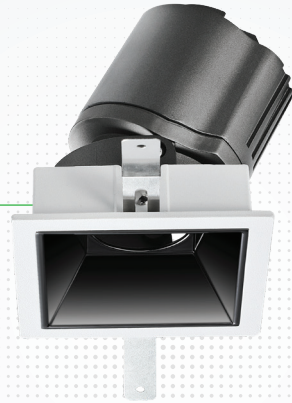
Spot	15°	Medium	24°	Flood	38°	Wide Flood	60°
ft	0	ft	0	ft	0	ft	0
3.0	0.72	3.0	1.41	3.0	2.03	3.0	3.15
9.0	2.15	9.0	4.22	9.0	6.09	9.0	9.45
15.0	3.58	15.0	7.04	15.0	10.15	15.0	15.75

Note: Product available in other Kelvin temperatures on request.

Gleam

Downlight

Gleam, a square shaped LED downlight is made of aluminum die cast with high quality powder coated luminaire housing and optimum heat sink that ensure high-durability. The specular darklight reflector in this store light allows outstanding visual comfort to the visitors so that they are able to explore the merchandise with ease.



> Technical Parameters

Voltage	100 - 277 V AC, 50-60 Hz
Light Source	Osram SOLERIQ S 19
Operating Position	Swiveling Type
Start Time	Instant
Driver	Stand Alone (included)
Optics	Darklight Technology Black, Silver
Dimming	On-Off / Triac / 0-10 V

CRI	Power (W)	CCT (K)	Total Lumen Output (lm)	Finish
>90	12 / 20 / 30 / 35	3000	1020 / 1700 / 2550 / 2975	Black / White
>90	12 / 20 / 30 / 35	4000	1068 / 1780 / 2670 / 3115	Black / White
>90	12 / 20 / 30 / 35	5000	1104 / 1840 / 2760 / 3220	Black / White

> Model/Colors

Available in Black and White.

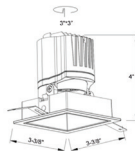


> Application Areas

Downlight For Indoor Applications.
Guest Room, Corridor, Restaurant,
Meeting Room Club, Hall, Hotel Entrance



> Technical Drawing



> Beam Spread (Options)

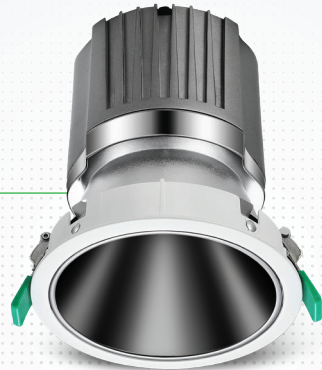
Spot	Medium	Flood	Wide Flood
15°	24°	38°	60°
ft	ft	ft	ft
0	0	0	0
3.0 0.72	3.0 1.41	3.0 2.03	3.0 3.15
9.0 2.15	9.0 4.22	9.0 6.09	9.0 9.45
15.0 3.58	15.0 7.04	15.0 10.15	15.0 15.75

Note: Product available in other Kelvin temperatures on request.

Spiro

Downlight

Spiro, a circular shaped LED downlight is made of aluminum die cast with high quality powder coated luminaire housing and optimum heat sink that ensure high-durability. The specular darklight reflector in this store light allows outstanding visual comfort to the visitors so that they are able to explore the merchandise with ease.



› Technical Parameters

Voltage	100 - 277 V AC, 50-60 Hz
Light Source	Osram SOLERIQ S 19
Operating Position	Non-Swiveling Type
Start Time	Instant
Driver	Stand Alone (included)
Optics	Darklight Technology Black, Silver
Dimming	On-Off / Triac / 0-10 V

CRI	Power (W)	CCT (K)	Total Lumen Output (lm)	Finish
>90	8 / 12 / 15 / 20 / 25 / 30 / 35	3000	640 / 960 / 1200 / 1600 / 2000 / 2400 / 2800	Black / White
>90	8 / 12 / 15 / 20 / 25 / 30 / 35	4000	680 / 1020 / 1275 / 1700 / 2125 / 2550 / 2975	Black / White
>90	8 / 12 / 15 / 20 / 25 / 30 / 35	5000	720 / 1080 / 1350 / 1800 / 2250 / 2700 / 3150	Black / White

› Model/Colors

Available in Black and White.

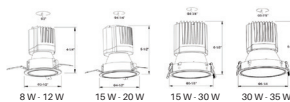


› Application Areas

Downlight For Indoor Applications.
Guest Room, Corridor, Restaurant,
Meeting Room Club, Hall, Hotel Entrance



› Technical Drawing



› Beam Spread (Options)

Spot	15°	Medium	24°	Flood	38°
ft	0.72	1.41	2.03	3.0	6.09
ft	0.72	1.41	2.03	3.0	6.09
ft	0.72	1.41	2.03	3.0	6.09
ft	0.72	1.41	2.03	3.0	6.09

Note: Product available in other Kelvin temperatures on request.

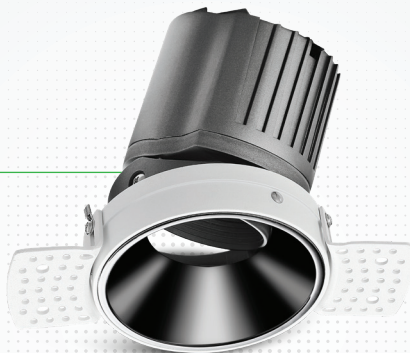
Lumos

Downlight

Circular in design, this LED downlight is made up of aluminum die cast with high quality powder coated luminaire housing and optimum heat sink. Available in multiple wattages and beam angle, the luminaire renders greater flexibility in its application for store lighting. Moreover, the specular darklight reflector in this store light allows outstanding visual comfort to the visitors.

› Technical Parameters

Voltage	100 - 277 V AC, 50-60 Hz
Light Source	Osram SOLERIQ S 19
Operating Position	Non-Swiveling Type
Start Time	Instant
Driver	Stand Alone (included)
Optics	Darklight Technology Black, Silver
Dimming	On-Off / Triac / 0-10 V



CRI	Power (W)	CCT (K)	Total Lumen Output (lm)	Finish
>90	8 / 12 / 15 / 20	3000	640 / 960 / 1200 / 1600	Black / White
>90	8 / 12 / 15 / 20	4000	680 / 1020 / 1275 / 1700	Black / White
>90	8 / 12 / 15 / 20	5000	720 / 1080 / 1350 / 1800	Black / White

› Model/Colors

Available in Black and White.

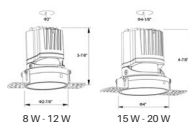


› Application Areas

Downlight For Indoor Applications.
Guest Room, Corridor, Restaurant,
Meeting Room Club, Hall, Hotel Entrance



› Technical Drawing



› Beam Spread (Options)

Spot	15°	Medium	24°	Flood	38°	Wide Flood	60°
ft	ø	ft	ø	ft	ø	ft	ø
3.0	0.72	3.0	1.41	3.0	2.03	3.0	3.15
9.0	2.15	9.0	4.22	9.0	6.09	9.0	9.45
15.0	3.58	15.0	7.04	15.0	10.15	15.0	15.75

Note: Product available in other Kelvin temperatures on request.

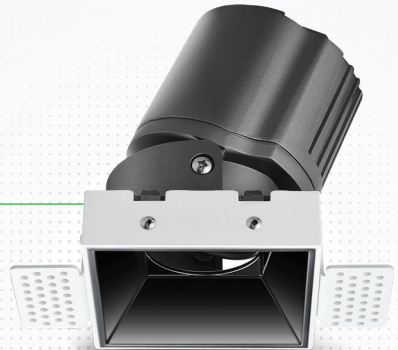
Theia

Downlight

Theia, a square LED downlight made of aluminum die cast with high quality powder coated luminaire housing and optimum heat sink. Specular reflector & power grid /global connectors available with isolated LED Driver using Ultra bright OSRAM COB.

Technical Parameters

Voltage	100 - 277 V AC, 50-60 Hz
Light Source	Osram SOLERIQ S 19
Operating Position	Non-Swiveling Type
Start Time	Instant
Driver	Stand Alone (included)
Optics	Darklight Technology Black, Silver
Dimming	On-Off / Triac / 0-10 V



CRI	Power (W)	CCT (K)	Total Lumen Output (lm)	Finish
>90	8 / 12 / 15 / 20	3000	640 / 960 / 1200 / 1600	Black / White
>90	8 / 12 / 15 / 20	4000	680 / 1020 / 1275 / 1700	Black / White
>90	8 / 12 / 15 / 20	5000	720 / 1080 / 1350 / 1800	Black / White

Model/Colors

Available in Black and White.

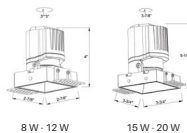


Application Areas

Downlight For Indoor Applications.
Guest Room, Corridor, Restaurant,
Meeting Room Club, Hall, Hotel Entrance



Technical Drawing



Beam Spread (Options)

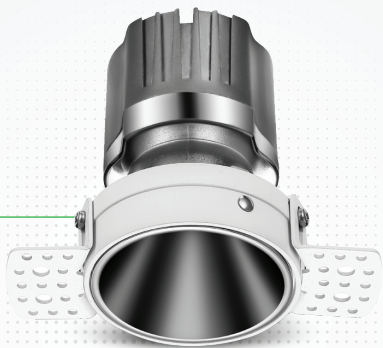
Spot	15°	Medium	24°	Flood	38°	Wide Flood	60°
ft	ø	ft	ø	ft	ø	ft	ø
3.0	0.72	3.0	1.41	3.0	2.03	3.0	3.15
9.0	2.15	9.0	4.22	9.0	6.09	9.0	9.45
15.0	3.58	15.0	7.04	15.0	10.15	15.0	15.75

Note: Product available in other Kelvin temperatures on request.

Olivio

Downlight

Olivio, a round LED downlight made of aluminum die cast with high quality powder coated luminaire housing and optimum heat sink. Specular reflector & power grid / global connectors available with isolated LED Driver using Ultra bright OSRAM COB.



> Technical Parameters

Voltage	100 - 277 V AC, 50-60 Hz
Light Source	Osram SOLERIQ S 19
Operating Position	Non-Swiveling Type
Start Time	Instant
Driver	Stand Alone (included)
Optics	Darklight Technology Black, Silver
Dimming	On-Off / Triac / 0-10 V

CRI	Power (W)	CCT (K)	Total Lumen Output (lm)	Finish
>90	8 / 12 / 15 / 20	3000	640 / 960 / 1200 / 1600	Black / White
>90	8 / 12 / 15 / 20	4000	680 / 1020 / 1275 / 1700	Black / White
>90	8 / 12 / 15 / 20	5000	720 / 1080 / 1350 / 1800	Black / White

> Model/Colors

Available in Black and White.

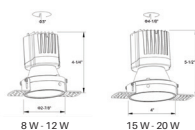


> Application Areas

Downlight For Indoor Applications.
Guest Room, Corridor, Restaurant,
Meeting Room Club, Hall, Hotel Entrance



> Technical Drawing



> Beam Spread (Options)

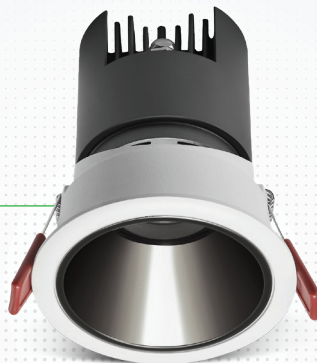
Spot	15°	Medium	24°	Flood	38°	Wide Flood	60°
ft	ø	ft	ø	ft	ø	ft	ø
3.0	0.72	3.0	1.41	3.0	2.03	3.0	3.15
9.0	2.15	9.0	4.22	9.0	6.09	9.0	9.45
15.0	3.58	15.0	7.04	15.0	10.15	15.0	15.75

Note: Product available in other Kelvin temperatures on request.

Glint

Downlight

Glint, a circular shaped LED downlight made of aluminum die cast with high quality powder coated luminaire housing and optimum heat sink. Specular reflector & power grid /global connectors available with isolated LED Driver using Ultra bright OSRAM COB.



Technical Parameters

Voltage	100 - 277 V AC, 50-60 Hz
Light Source	Osram SOLERIQ S 19
Operating Position	Swiveling Type
Start Time	Instant
Driver	Stand Alone (included)
Optics	Darklight Technology Black, Silver
Dimming	On-Off / Triac / 0-10 V

CRI	Power (W)	CCT (K)	Total Lumen Output (lm)	Finish
>90	8 / 15 / 20 / 30 / 40 / 50 / 55	3000	680 / 1275 / 1700 / 2550 / 3400 / 4250 / 4675	White
>90	8 / 15 / 20 / 30 / 40 / 50 / 55	4000	720 / 1350 / 1800 / 2700 / 3600 / 4500 / 4950	White
>90	8 / 15 / 20 / 30 / 40 / 50 / 55	5000	760 / 1425 / 1900 / 2850 / 3800 / 4750 / 5225	White

Model/Colors

Available in White.

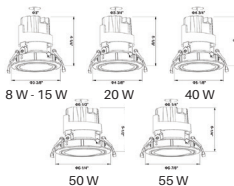


Application Areas

Downlight For Indoor Applications.
Guest Room, Corridor, Restaurant,
Meeting Room Club, Hall, Hotel Entrance



Technical Drawing



Beam Spread (Options)

Spot	Medium	Flood
15°	24°	38°
ft	ft	ft
3.0	3.0	3.0
0.72	1.41	2.03
9.0	2.15	4.22
2.15	4.22	6.09
15.0	3.58	7.04
3.58	7.04	10.15

Note: 1. Product available in other Kelvin temperatures on request.
2. Reflector Colour- Black, White, Silver, Golden available.

Ocul

Downlight

Ocul, a round shaped LED downlight made of aluminum die cast with high quality powder coated luminaire housing and optimum heat sink. Specular reflector & power grid/global connectors available with isolated LED Driver using Ultra bright OSRAM COB.



Technical Parameters

Voltage	100 - 277 V AC, 50-60 Hz
Light Source	Osram SOLERIQ S 19
Operating Position	Non - Swiveling Type
Start Time	Instant
Driver	Stand Alone (included)
Optics	Darklight Technology Black, Silver
Dimming	On-Off / Triac / 0-10 V

CRI	Power (W)	CCT (K)	Total Lumen Output (lm)	Finish
>90	10 / 15 / 20 / 30 / 40 / 50	2700	900 / 1350 / 1600 / 2700 / 3600 / 4500	White
>90	10 / 15 / 20 / 30 / 40 / 50	3000	950 / 1425 / 1900 / 2850 / 3800 / 4750	White
>90	10 / 15 / 20 / 30 / 40 / 50	4000	1000 / 1500 / 2000 / 3000 / 4000 / 5000	White
>90	10 / 15 / 20 / 30 / 40 / 50	5000	1050 / 1575 / 2100 / 3150 / 4200 / 5250	White

Model/Colors

Available in White.

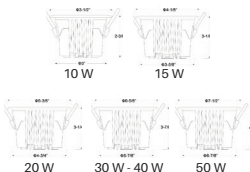


Application Areas

Downlight For Indoor Applications.
Classroom, Meeting Room,
Office, Club, Home.



Technical Drawing



Beam Spread (Options)

Spot	Medium	Flood	Wide Flood
15°	24°	36°	60°
ft	ft	ft	ft
30	30	30	30
0.72	1.41	2.03	3.15
90	2.15	4.22	6.09
150	3.58	7.04	10.15
			15.75

Note: 1. Product available in other Kelvin temperatures on request.

2. Reflector Colour- Black, White, Silver, Golden available.

3. SMD can improve lumen efficiency to 120-130 lm/W by adding extra cost.

Nova

Downlight

Nova, a round shaped LED downlight made of aluminum die cast with high quality powder coated luminaire housing and optimum heat sink. The specular darklight reflector in this store light allows outstanding visual comfort to the visitors so that they are able to explore the merchandise at ease.



Technical Parameters

Voltage	100 - 277 V AC, 50-60 Hz
Light Source	Osram SOLERIQ S 19
Operating Position	Swiveling Type, 360D
Start Time	Instant
Driver	Stand Alone (included)
Optics	Darklight Technology Black, Silver
Dimming	On-Off / Triac / 0-10 V

CRI	Power (W)	CCT (K)	Total Lumen Output (lm)	Finish
>90	12 / 20 / 30	2700	1080 / 1800 / 2700	White
>90	12 / 20 / 30	3000	1140 / 1900 / 2850	White
>90	12 / 20 / 30	4000	1200 / 2000 / 3000	White
>90	12 / 20 / 30	5000	1260 / 2100 / 3150	White

Model/Colors

Available in White.

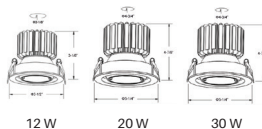


Application Areas

Downlight For Indoor Applications.
Guest Room, Corridor, Restaurant,
Meeting Room Club, Hall, Hotel Entrance



Technical Drawing



Beam Spread (Options)

Spot	Medium	Flood
12°	24°	36°
ft	ft	ft
3.0 0.72	3.0 1.41	3.0 2.03
9.0 2.15	9.0 4.22	9.0 6.09
15.0 3.58	15.0 7.04	15.0 10.15

- Note:** 1. Product available in other Kelvin temperatures on request.
2. Black/White inner ring -IP44 type available, add extra cost.
3. 30 W have Energy star type option, adding extra cost.

Scint

Downlight

Square in design, Scint LED downlight is made up of aluminum die cast with high quality powder coated luminaire housing and optimum heat sink. Available in multiple wattages and beam angle, the luminaire renders greater flexibility in its application for store lighting. Moreover, the specular darklight reflector in this store light allows outstanding visual comfort to the visitors.



Technical Parameters

Voltage	100 - 277 V AC, 50-60 Hz
Light Source	Osram SOLERIQ S 19
Operating Position	Swiveling Type, 360D
Start Time	Instant
Driver	Stand Alone (included)
Optics	Darklight Technology Black, Silver
Dimming	On-Off / Triac / 0-10 V

CRI	Power (W)	CCT (K)	Total Lumen Output (lm)	Finish
>90	12 / 20 / 30	2700	1080 / 1800 / 2700	White
>90	12 / 20 / 30	3000	1140 / 1900 / 2850	White
>90	12 / 20 / 30	4000	1200 / 2000 / 3000	White
>90	12 / 20 / 30	5000	1260 / 2100 / 3150	White

Model/Colors

Available in White.

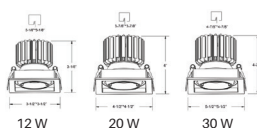


Application Areas

Downlight For Indoor Applications.
Guest Room, Corridor, Restaurant,
Meeting Room Club, Hall, Hotel Entrance



Technical Drawing



Beam Spread (Options)

Spot	15°	Medium	24°	Flood	38°
ft	0.72	1.41	2.03	3.58	7.04
3.0	0.72	1.41	2.03	3.58	7.04
9.0	2.15	4.22	6.09	10.15	10.15
15.0	3.58	7.04	10.15	10.15	10.15

Note: Product available in other Kelvin temperatures on request.

Odin

Downlight

Create the desired lighting effect in your stores with IK10's Odin, a twin square LED downlight made of aluminum die cast with high quality powder coated luminaire housing and optimum heat sink. These properties of the luminaire contribute to its effective functioning for a longer time period. Moreover, available in multiple wattages, color temperatures, finishes, and beam angles, this luminaire offers greater flexibility in its application.



› Technical Parameters

Voltage	100 - 277 V AC, 50-60 Hz
Light Source	Osram SOLERIQ S 19
Operating Position	Swiveling Type, 360D
Start Time	Instant
Driver	Stand Alone (included)
Optics	Darklight Technology Black, Silver
Dimming	On-Off / Triac / 0-10 V

CRI	Power (W)	CCT (K)	Total Lumen Output (lm)	Finish
>90	24 / 40 / 60	2700	1800 / 3000 / 4500	White
>90	24 / 40 / 60	3000	1920 / 3200 / 4800	White
>90	24 / 40 / 60	4000	2040 / 3400 / 5100	White
>90	24 / 40 / 60	5000	2160 / 3600 / 5400	White

› Model/Colors

Available in White.

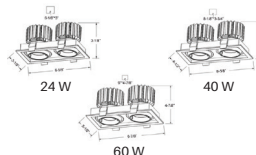


› Application Areas

Downlight For Indoor Applications.
Guest Room, Corridor, Restaurant,
Meeting Room Club, Hall, Hotel Entrance



› Technical Drawing



› Beam Spread (Options)

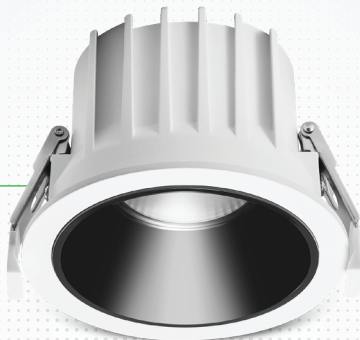
Spot	Medium	Flood
15°	24°	36°
ft	ft	ft
3.0 0.72	3.0 1.41	3.0 2.03
9.0 2.15	9.0 4.22	9.0 6.09
15.0 3.58	15.0 7.04	15.0 10.15

Note: Product available in other Kelvin temperatures on request.

Stella

Downlight

Stella, a round LED downlight made of aluminum die cast with high quality powder coated luminaire housing and optimum heat sink. Specular reflector & power grid/global connectors available with isolated LED Driver using Ultra bright OSRAM COB.



Technical Parameters

Voltage	100 - 277 V AC, 50-60 Hz
Light Source	Osram SOLERIQ S 19
Operating Position	Non - Swiveling Type
Start Time	Instant
Driver	Stand Alone (included)
Optics	Darklight Technology Black, Silver
Dimming	On-Off / Triac / 0-10 V

CRI	Power (W)	CCT (K)	Total Lumen Output (lm)	Finish
>90	12 / 15 / 20 / 30 / 40 / 50 / 55	2700	1080 / 1350 / 1800 / 2700 / 3600 / 4000 / 4400	White
>90	12 / 15 / 20 / 30 / 40 / 50 / 55	3000	1140 / 1425 / 1900 / 2850 / 3800 / 4750 / 5225	White
>90	12 / 15 / 20 / 30 / 40 / 50 / 55	4000	1200 / 1500 / 2000 / 3000 / 4000 / 5000 / 5500	White
>90	12 / 15 / 20 / 30 / 40 / 50 / 55	5000	1260 / 1575 / 2100 / 3150 / 4200 / 5250 / 5775	White

Model/Colors

Available in White.

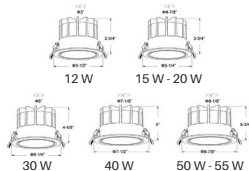


Application Areas

Downlight For Indoor Applications.
Guest Room, Corridor, Restaurant,
Meeting Room Club, Hall.



Technical Drawing



Beam Spread (Options)

Spot	15°	Medium	24°	Flood	36°	Wide Flood	60°
ft	0	ft	0	ft	0	ft	0
3.0	0.72	3.0	1.41	3.0	2.03	3.0	3.15
9.0	2.15	9.0	4.22	9.0	6.09	9.0	9.45
15.0	3.58	15.0	7.04	15.0	10.15	15.0	15.75

Note: 1. Product available in other Kelvin temperatures on request.
2. Reflector Color: Black/Silver/White available.

Glim

Downlight

Glim, a round shaped LED downlight made of aluminum die cast with high quality powder coated luminaire housing and optimum heat sink. Specular reflector & power grid /global connectors available with isolated LED Driver using Ultra bright OSRAM COB.



› Technical Parameters

Voltage	100 - 277 V AC, 50-60 Hz
Light source	Osram SOLERIQ S 19
Operating Position	Non - Swiveling Type
Start time	Instant
Driver	Stand Alone (included)
Optics	Darklight Technology Black, Silver
Dimming	On-Off / Triac / 0-10 V

CRI	Power (W)	CCT (K)	Total Lumen Output (lm)	Finish
>90	12 / 15 / 20 / 30 / 40	2700	1080 / 1350 / 1800 / 2700 / 3600	Black / White
>90	12 / 15 / 20 / 30 / 40	3000	1140 / 1425 / 1900 / 2850 / 3800	Black / White
>90	12 / 15 / 20 / 30 / 40	4000	1200 / 1500 / 2000 / 3000 / 4000	Black / White
>90	12 / 15 / 20 / 30 / 40	5000	1260 / 1575 / 2100 / 3150 / 4200	Black / White

› Model/Colors

Available in Black and White.

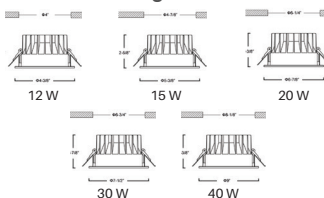


› Application Areas

Downlight For Indoor Applications.
Outdoor Corridor, Bathroom, Eave.



› Technical Drawing



› Beam Spread (Options)

Wide Flood		
60°		
ft	ø	
3.0	3.15	
9.0	9.45	
15.0	15.75	

Note: Product available in other Kelvin temperatures on request.

Flare

Downlight

Flare downlight is a square shaped fixture, that illuminates a store in the most effective manner without being obtrusive. The smart engineering of the luminaire with specular reflector & power grid/ global connectors along with high voltage standing in-house LED driver makes it an ideal choice for lighting your stores.

> Technical Parameters

Voltage	100 - 277 V AC, 50-60 Hz
Light Source	Osram SOLERIQ S 19
Operating Position	Non - Swiveling Type
Start Time	Instant
Driver	Stand Alone (included)
Optics	Darklight Technology Black, Silver
Dimming	On-Off / Triac / 0-10 V



CRI	Power (W)	CCT (K)	Total Lumen Output (lm)	Finish
>90	12 / 15 / 20 / 30 / 40	2700	1080 / 1350 / 1800 / 2700 / 3600	White / Black
>90	12 / 15 / 20 / 30 / 40	3000	1140 / 1425 / 1900 / 2850 / 3800	White / Black
>90	12 / 15 / 20 / 30 / 40	4000	1200 / 1500 / 2000 / 3000 / 4000	White / Black
>90	12 / 15 / 20 / 30 / 40	5000	1260 / 1575 / 2100 / 3150 / 4200	White / Black

> Model/Colors

Available in Black and White.

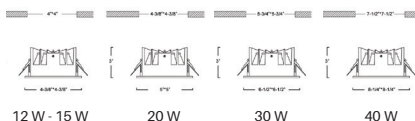


> Application Areas

Downlight For Indoor Applications.
Outdoor Corridor, Bathroom, Eave.



> Technical Drawing



> Beam Spread (Options)

Wide Flood		
60°		
ft	ø	
3.0	3.15	
9.0	9.45	
15.0	15.75	

Note: Product available in other Kelvin temperatures on request.

Lumin

Downlight

Lumin, a round shaped LED downlight made of aluminum die cast with high quality powder coated luminaire housing and optimum heat sink. Specular reflector & power grid / global connectors available with isolated LED Driver using Ultra bright OSRAM COB.



› Technical Parameters

Voltage	100 - 277 V AC, 50-60 Hz
Light Source	Osram SOLERIQ S 19
Operating Position	Non - Swiveling Type
Start Time	Instant
Driver	Stand Alone (included)
Optics	Darklight Technology Black, Silver
Dimming	On-Off / Triac / 0-10 V

CRI	Power (W)	CCT (K)	Total Lumen Output (lm)	Finish
>90	12 / 20 / 30 / 40 / 50	2700	1080 / 1800 / 2700 / 3600 / 4500	Black / White
>90	12 / 20 / 30 / 40 / 50	3000	1140 / 1900 / 2850 / 3800 / 4750	Black / White
>90	12 / 20 / 30 / 40 / 50	4000	1200 / 2000 / 3000 / 4000 / 5000	Black / White
>90	12 / 20 / 30 / 40 / 50	5000	1260 / 2100 / 3150 / 4200 / 5250	Black / White

› Model/Colors

Available in Black and White.

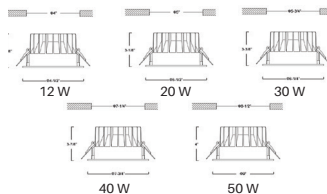


› Application Areas

Downlight For Indoor Applications.
Guest Room, Corridor, Restaurant, Meeting
Room Club, Hall, Hotel Entrance



› Technical Drawing



› Beam Spread (Options)

Wide Flood	
	50°
ft	ø
3.0	3.15
9.0	9.45
15.0	15.75

Note: Product available in other Kelvin temperatures on request.

Aspro

Downlight

Aspro, a square LED downlight made of aluminum die cast with high quality powder coated luminaire housing and optimum heat sink. Specular reflector & power grid /global connectors available with isolated LED Driver using Ultra bright OSRAM COB. Moreover, the specular darklight reflector in this store light allows outstanding visual comfort to the visitors.



Technical Parameters

Voltage	100 - 277 V AC, 50-60 Hz
Light Source	Osram SOLERIQ S 19
Operating Position	Non - Swiveling Type
Start Time	Instant
Driver	Stand Alone (included)
Optics	Darklight Technology Black, Silver
Dimming	On-Off / Triac / 0-10 V

CRI	Power (W)	CCT (K)	Total Lumen Output (lm)	Finish
>90	12 / 20 / 30 / 40 / 50	2700	1080 / 1800 / 2700 / 3600 / 4500	White / Black
>90	12 / 20 / 30 / 40 / 50	3000	1140 / 1900 / 2850 / 3800 / 4750	White / Black
>90	12 / 20 / 30 / 40 / 50	4000	1200 / 2000 / 3000 / 4000 / 5000	White / Black
>90	12 / 20 / 30 / 40 / 50	5000	1260 / 2100 / 3150 / 4200 / 5250	White / Black

Model/Colors

Available in Black and White.

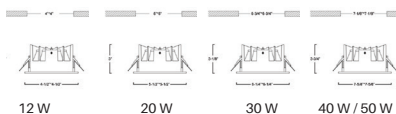


Application Areas

Downlight For Indoor Applications.
Guest Room, Corridor, Restaurant,
Meeting Room Club, Hall, Hotel Entrance



Technical Drawing



Beam Spread (Options)

Wide Flood	
	50°
ft	ø
3.0	3.15
9.0	9.45
15.0	15.75

Note: Product available in other Kelvin temperatures on request.

Orim

Downlight

Orim is a round shaped LED downlight, an ideal replacement of conventional store lights, ensures high energy savings and quality lighting in stores. Specular reflector & power grid / global connectors available with isolated LED Driver using Ultra bright OSRAM COB. Moreover, the specular darklight reflector in this store light allows outstanding visual comfort to the visitors.



› Technical Parameters

Voltage	100 - 277 V AC, 50-60 Hz
Light Source	Osram SOLERIQ S 19
Operating Position	Non - Swiveling Type
Start Time	Instant
Driver	Stand Alone (included)
Optics	Darklight Technology Black, Silver
Dimming	On-Off / Triac / 0-10 V

CRI	Power (W)	CCT (K)	Total Lumen Output (lm)	Finish
>90	12 / 15 / 20 / 30 / 40 / 50 / 55	2700	960 / 1200 / 1600 / 2400 / 3200 / 4000 / 4400	White
>90	12 / 15 / 20 / 30 / 40 / 50 / 55	3000	1020 / 1275 / 1700 / 2550 / 3400 / 4250 / 4675	White
>90	12 / 15 / 20 / 30 / 40 / 50 / 55	4000	1080 / 1350 / 1800 / 2700 / 3600 / 4500 / 4950	White
>90	12 / 15 / 20 / 30 / 40 / 50 / 55	5000	1140 / 1425 / 1900 / 2850 / 3800 / 4750 / 5225	White

› Model/Colors

Available in White.

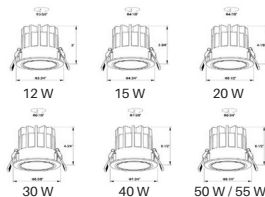


› Application Areas

Guest Room, Corridor,
Restaurant, Meeting Room Club,
Hall, Hotel Entrance



› Technical Drawing



› Beam Spread (Options)

Spot	15°	Medium	30°	Flood	45°
ft	ø	ft	ø	ft	ø
3.0	0.72	3.0	1.41	3.0	2.03
9.0	2.15	9.0	4.22	9.0	6.09
15.0	3.58	15.0	7.04	15.0	10.15

Note: 1. Product available in other Kelvin temperatures on request.
2. Reflector: Black/White option available.

Avant

Downlight

Avant, a round shaped LED downlight made of aluminum die cast with high quality powder coated luminaire housing and optimum heat sink. Specular reflector & power grid/global connectors available with isolated LED Driver using Ultra bright OSRAM COB.



Technical Parameters

Voltage	100 - 277 V AC, 50-60 Hz
Light Source	Osram SOLERIQ S 19
Operating Position	Swiveling Type
Start Time	Instant
Driver	Stand Alone (included)
Dimming	On-Off / Triac / 0-10 V

CRI	Power (W)	CCT (K)	Total Lumen Output (lm)	Finish
>90	8 / 15 / 25	2700	720 / 1350 / 2250	Black / White
>90	8 / 15 / 25	3000	760 / 1425 / 2375	Black / White
>90	8 / 15 / 25	4000	800 / 1500 / 2500	Black / White
>90	8 / 15 / 25	5000	840 / 1575 / 2625	Black / White

Model/Colors

Available in White & Black.

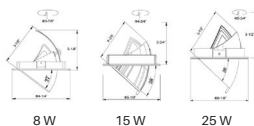


Application Areas

Downlight For Indoor Applications.
Stores, Corridor, Restaurant, Club.



Technical Drawing



Beam Spread (Options)

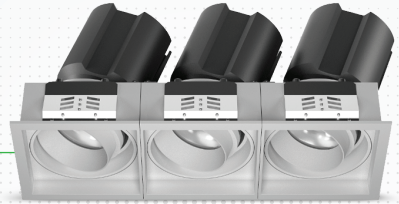
Spot		Medium		Flood	
15°		24°		36°	
ft	ø	ft	ø	ft	ø
3.0	0.72	3.0	1.41	3.0	2.03
9.0	2.15	9.0	4.22	9.0	6.09
15.0	3.58	15.0	7.04	15.0	10.15

Note: 1. Product available in other Kelvin temperatures on request.
2. Reflector: Black/White option available.

Triad

Downlight

Triad, a square LED downlight made of aluminum die cast with high quality powder coated luminaire housing and optimum heat sink. Specular reflector & power grid / global connectors available with isolated LED Driver using Ultra bright OSRAM COB.



Technical Parameters

Voltage	100 - 277 V AC, 50-60 Hz
Light Source	Osram SOLERIQ S 19
Operating Position	Swiveling Type
Start Time	Instant
Driver	Stand Alone (included)
Dimming	On-Off / Triac / 0-10 V

CRI	Power (W)	CCT (K)	Total Lumen Output (lm)	Finish
>90	30	2700	2700	Black / White
>90	30	3000	2850	Black / White
>90	30	4000	3000	Black / White
>90	30	5000	3150	Black / White

Model/Colors

Available in White & Black.

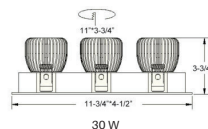


Application Areas

Downlight For Indoor Applications.
Stores, Corridor, Restaurant, Club.



Technical Drawing



Beam Spread (Options)

Spot	Medium	Flood	Wide Flood
15°	24°	36°	60°
ft	ft	ft	ft
3.0	3.0	3.0	3.0
0.72	1.41	2.03	3.15
9.0	2.15	6.09	9.45
15.0	3.58	10.15	15.75

Note: Product available in other Kelvin temperatures on request.

Pistone

Downlight

Pistone, a cylindrical shaped LED surface downlight made of aluminum die cast with high quality powder coated luminaire housing and optimum heat sink. Specular reflector & powergrid/global connectors available with isolated LED Driver using Ultra bright OSRAM COB.



› Technical Parameters

Voltage	100 - 277 V AC, 50-60 Hz
Light Source	Osram SOLERIQ S 19
Operating Position	Non - Swiveling Type
Start Time	Instant
Driver	Stand Alone (included)
Optics	Reflective Cup Structure
Beam Spread	Spot, Medium, Flood
Dimming	Triac dimming / 0-10 V Dimming

CRI	Power (W)	CCT (K)	Total Lumen Output (lm)	Finish
>90	12 / 15 / 20 / 25 / 30 / 40 / 50 / 55	2700	960 / 1200 / 1600 / 2000 / 2400 / 3200 / 4000 / 4400	Black / White
>90	12 / 15 / 20 / 25 / 30 / 40 / 50 / 55	3000	1020 / 1275 / 1700 / 2125 / 2550 / 3400 / 4250 / 4675	Black / White
>90	12 / 15 / 20 / 25 / 30 / 40 / 50 / 55	4000	1080 / 1350 / 1800 / 2250 / 2700 / 3600 / 4500 / 4950	Black / White
>90	12 / 15 / 20 / 25 / 30 / 40 / 50 / 55	5000	1140 / 1425 / 1900 / 2375 / 2850 / 3800 / 4750 / 5225	Black / White

› Model/Colors

Available in White & Black.



› Application Areas

Downlight For Indoor Applications.
Guest Room, Restaurant, Meeting Room,
Club, Hall, Hotel Entrance.



› Technical Drawing



› Beam Spread (Options)

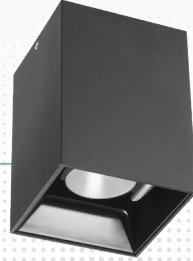
Spot	Medium	Flood
15°	30°	45°
ft	ft	ft
3.0	3.0	3.0
9.0	9.0	9.0
15.0	15.0	15.0
0.72	1.41	2.03
2.15	4.22	6.09
3.58	7.04	10.15

Note: Product available in other Kelvin temperatures on request.

Cubra

Downlight

Cubra, a square shaped LED surface downlight made of aluminum die cast with high quality powder coated luminaire housing and optimum heat sink. Specular reflector & power grid / global connectors available with isolated LED Driver using Ultra bright OSRAM COB.30.



Technical Parameters

Voltage	100 - 277 V AC, 50-60 Hz
Light Source	Osram SOLERIQ S 19
Operating Position	Non - Swiveling Type
Start Time	Instant
Driver	Stand Alone (included)
Optics	Reflective Cup Structure
Beam Spread	Spot, Medium, Flood
Dimming	Triac Dimming / 0-10 V Dimming

CRI	Power (W)	CCT (K)	Total Lumen Output (lm)	Finish
>90	20 / 30	2700	1600 / 2400	Black / White
>90	20 / 30	3000	1700 / 2550	Black / White
>90	20 / 30	4000	1800 / 2700	Black / White
>90	20 / 30	5000	1900 / 2850	Black / White

Model/Colors

Available in White & Black.



Application Areas

Downlight For Indoor Applications.
Guest Room, Restaurant, Meeting Room,
Club, Hall, Hotel Entrance.



Technical Drawing



Beam Spread

Spot 15°			Medium 30°			Flood 45°		
ft	ø		ft	ø		ft	ø	
3.0	0.72		3.0	1.41		3.0	2.03	
9.0	2.15		9.0	4.22		9.0	6.09	
15.0	3.58		15.0	7.04		15.0	10.15	

Note: Product available in other Kelvin temperatures on request.

Glisten

Downlight

Glisten is a cylindrical shaped LED downlight, an ideal replacement of conventional store lights that ensures high energy savings and quality lighting in stores. Specular reflector & power grid / global connectors available with isolated LED Driver using Ultra bright OSRAM COB.



Technical Parameters

Voltage	100 - 277 V AC, 50-60 Hz
Light Source	Osram SOLERIQ S 19
Operating Position	Non - Swiveling Type
Start Time	Instant
Driver	Stand Alone (included)
Optics	Reflective Cup Structure
Beam Spread	Spot, Medium, Flood
Dimming	Triac Dimming / 0-10 V Dimming

CRI	Power (W)	CCT (K)	Total Lumen Output (lm)	Finish
>90	15 / 20 / 30 / 40	2700	1200 / 1600 / 2400 / 3200	White
>90	15 / 20 / 30 / 40	3000	1275 / 1700 / 2550 / 3400	White
>90	15 / 20 / 30 / 40	4000	1350 / 1800 / 2700 / 3600	White
>90	15 / 20 / 30 / 40	5000	1425 / 1900 / 2850 / 3800	White

Model/Colors

Available in White.

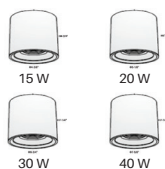


Application Areas

Downlight For Indoor Applications.
Guest Room, Restaurant, Meeting Room,
Club, Hall, Hotel Entrance.



Technical Drawing



Beam Spread

Spot		Medium		Flood	
15°		30°		45°	
ft	ø	ft	ø	ft	ø
3.0	0.72	3.0	1.41	3.0	2.03
9.0	2.15	9.0	4.22	9.0	6.09
15.0	3.58	15.0	7.04	15.0	10.15

Note: Product available in other Kelvin temperatures on request.

Levin

Downlight

Levin, a square shaped LED surface downlight made of aluminum die cast with high quality powder coated luminaire housing and optimum heat sink. Specular reflector & power grid / global connectors available with isolated LED Driver using Ultra bright OSRAM COB.



Technical Parameters

Voltage	100 - 277 V AC, 50-60 Hz
Light Source	Osram SOLERIQ S 19
Operating Position	Non - Swiveling Type
Start Time	Instant
Driver	Stand Alone (included)
Optics	Reflective Cup Structure
Beam Spread	Spot, Medium, Flood
Dimming	Triac dimming / 0-10 V Dimming

CRI	Power (W)	CCT (K)	Total Lumen Output (lm)	Finish
>90	15 / 20 / 30 / 40	2700	1200 / 1600 / 2400 / 3200	White
>90	15 / 20 / 30 / 40	3000	1275 / 1700 / 2550 / 3400	White
>90	15 / 20 / 30 / 40	4000	1350 / 1800 / 2700 / 3600	White
>90	15 / 20 / 30 / 40	5000	1425 / 1900 / 2850 / 3800	White

Model/Colors

Available in White.

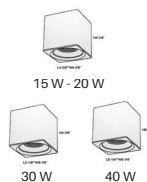


Application Areas

Downlight For Indoor Applications.
Guest Room, Restaurant, Meeting Room,
Club, Hall, Hotel Entrance.



Technical Drawing



Beam Spread

Spot	15°	Medium	30°	Flood	45°
ft	ø	ft	ø	ft	ø
3.0	0.72	3.0	1.41	3.0	2.03
9.0	2.15	9.0	4.22	9.0	6.09
15.0	3.58	15.0	7.04	15.0	10.15

Note: Product available in other Kelvin temperatures on request.

Bolt

Downlight

Bolt, a cylindrical shaped LED surface downlight made of aluminum die cast with high quality powder coated luminaire housing and optimum heat sink. Specular reflector & power grid / global connectors available with isolated LED Driver using Ultra bright OSRAM COB.



> Technical Parameters

Voltage	100 - 277 V AC, 50-60 Hz
IP Rating	IP65
Light Source	Osram SOLERIQ S 19
Operating Position	Non - Swiveling Type
Start Time	Instant
Driver	Stand Alone (included)
Optics	Reflective Cup Structure
Beam Spread	Spot, Medium, Flood
Dimming	Triac Dimming / 0-10 V Dimming

CRI	Power (W)	CCT (K)	Total Lumen Output (lm)	Finish
>90	30 / 40 / 50 / 55	2700	2400 / 3200 / 4000 / 4400	Black / White
>90	30 / 40 / 50 / 55	3000	2550 / 3400 / 4250 / 4675	Black / White
>90	30 / 40 / 50 / 55	4000	2700 / 3600 / 4500 / 4950	Black / White
>90	30 / 40 / 50 / 55	5000	2850 / 3800 / 4750 / 5225	Black / White

> Model/Colors

Available in White & Black.

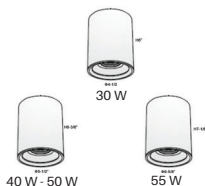


> Application Areas

Downlight For Indoor Applications.
Guest Room, Restaurant, Meeting Room,
Club, Hall, Hotel Entrance.



> Technical Drawing






> Beam Spread

Medium			Flood		
20°			40°		
ft	ø		ft	ø	
3.0	1.41		3.0	2.03	
9.0	4.22		9.0	6.09	
15.0	7.04		15.0	10.15	

Note: Product available in other Kelvin temperatures on request.

Pendant Lights

Pendant lights are commonly used in stores as ambient or task lights. They are a perfect replacement for traditional store lights and deliver both on style and function. Pendant lights can be used in places such as the bill counter, aisle areas, or changing rooms within a store.

-  Come in varied shapes and sizes to complement different spaces.
-  Their unique designs uplift the aesthetic appeal of your stores.
-  Are highly customizable, low maintenance, and flexible.



Cogent

Pendant Light

Cogent is a technologically advanced LED Pendant Light that incorporates electronic gear and a high-quality lens with wide beam spread. While commonly used as task light, the unique and state-of-the-art design of this luminaire also enhances the overall aesthetics of your store.

> Technical Parameters

Voltage	110 - 270 V AC, 50-60 Hz
Light Source	LED
Operating Position	360°/60°
Start Time	Instant
Driver	Built in
Optics	PMMA
Beam Spread	Wide Flood



CRI	Power (W)	CCT (K)	Total Lumen Output (lm)	Finish
80	30 / 40	3000	3150 / 4200	Black / White / Grey
80	30 / 40	4000	2993 / 3990	Black / White / Grey
80	30 / 40	6500	2845 / 3790	Black / White / Grey
90	30 / 40	3000	2993 / 3906	Black / White / Grey
90	30 / 40	4000	2783 / 3627	Black / White / Grey
90	30 / 40	6500	2645 / 3525	Black / White / Grey

> Model/Colors

Available in White, Grey and Black.

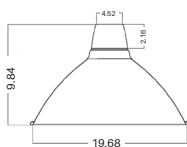


> Application Areas

Pendant light for indoor applications.



> Technical Drawing



> Beam Spread (Options)

Wide Flood	
ft	°
3.0	3.15
9.0	9.45
15.0	15.75

Note: 1. Product available in other Kelvin temperatures on request.
2. Wattages can be customized as per the requirement.

Remus

Pendant Light

Remus is a technologically advanced LED Pendant Light that incorporates electronic gear and a high-quality lens with different beam spread. While commonly used as task light, the unique and state-of-the-art design of this luminaire also enhances the overall aesthetics of your store.

> Technical Parameters

Voltage	100 - 277 V AC, 50-60 Hz
Light Source	Osram SOLERIQ S 19
Operating Position	Swiveling Type
Start Time	Instant
Driver	Stand alone (included)
Beam Spread	Spot, Medium, Flood
Dimming	Triac Dimming



CRI	Power (W)	CCT (K)	Total Lumen Output (lm)	Finish
>90	20	2700	1800	Black / White
>90	20	3000	1900	Black / White
>90	20	4000	2000	Black / White
>90	20	5000	2100	Black / White

> Model/Colors

Available in White & Black.



> Application Areas

Pendant light for indoor applications.



> Technical Drawing



> Beam Spread (Options)

Spot			Medium			Flood		
11°			24°			36°		
ft	Ø		ft	Ø		ft	Ø	
3.0	0.72		3.0	1.41		3.0	2.03	
9.0	2.15		9.0	4.22		9.0	6.09	
15.0	3.58		15.0	7.04		15.0	10.15	

Note: 1. Product available in other Kelvin temperatures on request.

2. Ceiling cup standard size: 4-3/4".

3. Cable standard length: 2.

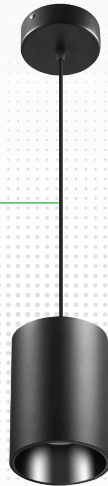
Aurora

Pendant Light

Aurora is a technologically advanced LED Pendant Light that incorporates electronic gear and a high-quality lens with wide beam spread. While commonly used as task light, the unique and state-of-the-art design of this luminaire also enhances the overall aesthetics of your store.

› Technical Parameters

Voltage	100 - 277 V AC, 50-60 Hz
Light Source	Osram SOLERIQ S 19
Operating Position	No Swiveling Type
Start Time	Instant
Driver	Stand Alone (included)
Optics	Reflective Cup Structure
Beam Spread	Spot, Medium, Flood
Dimming	Triac Dimming / 0-10 V Dimming



CRI	Power (W)	CCT (K)	Total Lumen Output (lm)	Finish
>90	8 / 12 / 15 / 20 / 25 / 30 / 40 / 50 / 55	2700	640 / 960 / 1200 / 1600 / 2000 / 2400 / 3200 / 4000 / 4400	Black / White
>90	8 / 12 / 15 / 20 / 25 / 30 / 40 / 50 / 55	3000	680 / 1020 / 1275 / 1700 / 2125 / 2550 / 3400 / 4250 / 4675	Black / White
>90	8 / 12 / 15 / 20 / 25 / 30 / 40 / 50 / 55	4000	720 / 1080 / 1350 / 1800 / 2250 / 2700 / 3600 / 4500 / 4950	Black / White
>90	8 / 12 / 15 / 20 / 25 / 30 / 40 / 50 / 55	5000	760 / 1140 / 1425 / 1900 / 2375 / 2850 / 3800 / 4750 / 5225	Black / White

› Model/Colors

Available in White & Black.

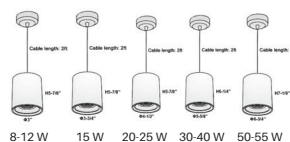


› Application Areas

Pendant Light For Indoor Applications.
Guest Room, Restaurant, Meeting Room,
Club, Hall, Hotel Entrance



› Technical Drawing



› Beam Spread

Spot 15°			Medium 30°			Flood 45°		
ft	°	ft	ft	°	ft	ft	°	ft
3.0	0.72	3.0	1.41	3.0	2.03	3.0	0	3.0
9.0	2.15	9.0	4.22	9.0	6.09	9.0	0	9.0
15.0	3.58	15.0	7.04	15.0	10.15	15.0	0	15.0

Note: 1. Product available in other Kelvin temperatures on request.
2. Reflector color: Black/White/Silver option available.
3. Ceiling cup standard size: 4-3/4"; Cable standard length: 2ft

Eos

Pendant Light

Eos is a technologically advanced LED Pendant Light that incorporates electronic gear and a high-quality lens with wide beam spread. While commonly used as task light, the unique and state-of-the-art design of this luminaire also enhances the overall aesthetics of your store.



> Technical Parameters

Voltage	100 - 277 V AC, 50-60 Hz
Light Source	Osram SOLERIQ S 19
Operating Position	No Swiveling Type
Start Time	Instant
Driver	Stand Alone (included)
Optics	Reflective Cup Structure
Beam Spread	Spot, Medium, Flood
Dimming	Triac Dimming / 0-10 V Dimming

CRI	Power (W)	CCT (K)	Total Lumen Output (lm)	Finish
>90	8 / 15 / 20 / 30	2700	640 / 1200 / 1600 / 2400	Black / White
>90	8 / 15 / 20 / 30	3000	680 / 1275 / 1700 / 2550	Black / White
>90	8 / 15 / 20 / 30	4000	720 / 1350 / 1800 / 2700	Black / White
>90	8 / 15 / 20 / 30	5000	760 / 1425 / 1900 / 2850	Black / White

> Model/Colors

Available in White & Black.

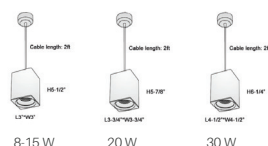


> Application Areas

Pendant Light For Indoor Applications.
Guest Room, Restaurant, Meeting Room,
Club, Hall, Hotel Entrance



> Technical Drawing



> Beam Spread

Spot		Medium		Flood	
15°		30°		45°	
ft	°	ft	°	ft	°
3.0	0.72	3.0	1.41	3.0	2.03
9.0	2.15	9.0	4.22	9.0	6.09
15.0	3.58	15.0	7.04	15.0	10.15

Note: Product available in other Kelvin temperatures on request.

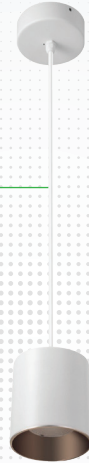
Daze

Pendant Light

Daze is a technologically advanced LED Pendant Light that incorporates electronic gear and a high-quality lens with wide beam spread. While commonly used as task light, the unique and state-of-the-art design of this luminaire also enhances the overall aesthetics of your store.

Technical Parameters

Voltage	100 - 277 V AC, 50-60 Hz
Light Source	Osram SOLERIQ S 19
Operating Position	No Swiveling Type
Start Time	Instant
Driver	Stand Alone (included)
Optics	Reflective Cup Structure
Beam Spread	Spot, Medium, Flood
Dimming	Triac Dimming / 0-10 V Dimming



CRI	Power (W)	CCT (K)	Total Lumen Output (lm)	Finish
>90	8 / 15 / 20 / 30 / 40	2700	640 / 1200 / 1600 / 2400 / 3200	Black / White
>90	8 / 15 / 20 / 30 / 40	3000	680 / 1275 / 1700 / 2550 / 3400	Black / White
>90	8 / 15 / 20 / 30 / 40	4000	720 / 1350 / 1800 / 2700 / 3600	Black / White
>90	8 / 15 / 20 / 30 / 40	5000	760 / 1425 / 1900 / 2850 / 3800	Black / White

Model/Colors

Available in White & Black.

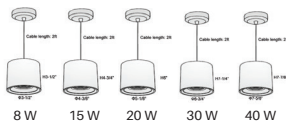


Application Areas

Pendant Light For Indoor Applications.
Guest Room, Restaurant, Meeting Room,
Club, Hall, Hotel Entrance



Technical Drawing



Beam Spread

Spot	Medium	Flood
15°	30°	45°
ft	ft	ft
0	0	0
3.0	0.72	1.41
9.0	2.15	4.22
15.0	3.58	7.04
		10.15

Note: 1. Product available in other Kelvin temperatures on request.
2. Ceiling cup standard size: 4-3/4"; Cable standard length: 2ft

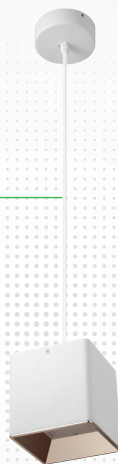
Mica

Pendant Light

Mica is a technologically advanced LED Pendant Light that incorporates electronic gear and a high-quality lens with wide beam spread. While commonly used as task light, the unique and state-of-the-art design of this luminaire also enhances the overall aesthetics of your store.

Technical Parameters

Voltage	100 - 277 V AC, 50-60 Hz
Light Source	Osram SOLERIQ S 19
Operating Position	No Swiveling Type
Start Time	Instant
Driver	Stand Alone (included)
Optics	Reflective Cup Structure
Beam Spread	Spot, Medium, Flood
Dimming	Triac dimming / 0-10 V Dimming



CRI	Power (W)	CCT (K)	Total Lumen Output (lm)	Finish
>90	8 / 15 / 20 / 30 / 40	2700	640 / 1200 / 1600 / 2400 / 3200	White
>90	8 / 15 / 20 / 30 / 40	3000	680 / 1275 / 1700 / 2550 / 3400	White
>90	8 / 15 / 20 / 30 / 40	4000	720 / 1350 / 1800 / 2700 / 3600	White
>90	8 / 15 / 20 / 30 / 40	5000	760 / 1425 / 1900 / 2850 / 3800	White

Model/Colors

Available in White.

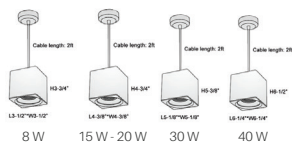


Application Areas

Pendant Light For Indoor Applications.
Guest Room, Restaurant, Meeting Room,
Club, Hall, Hotel Entrance



Technical Drawing



Beam Spread

Spot		Medium		Flood	
15°		30°		45°	
ft	0	ft	0	ft	0
3.0	0.72	3.0	1.41	3.0	2.03
9.0	2.15	9.0	4.22	9.0	6.09
15.0	3.58	15.0	7.04	15.0	10.15

Note: 1. Product available in other Kelvin temperatures on request.
2. Ceiling cup standard size: 4-3/4"; Cable standard length: 2ft

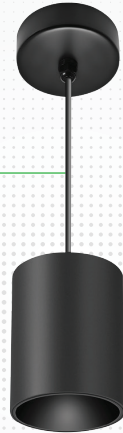
Flaxo

Pendant Light

Flaxo is a technologically advanced LED Pendant Light that incorporates electronic gear and a high-quality lens with wide beam spread. While commonly used as task light, the unique and state-of-the-art design of this luminaire also enhances the overall aesthetics of your store.

> Technical Parameters

Voltage	100 - 277 V AC, 50-60 Hz
IP Rating	IP65
Light Source	Osram SOLERIQ S 19
Operating Position	No Swiveling Type
Start Time	Instant
Driver	Stand Alone (included)
Optics	Reflective Cup Structure
Beam Spread	Medium, Flood
Dimming	Triac Dimming / 0-10 V Dimming



CRI	Power (W)	CCT (K)	Total Lumen Output (lm)	Finish
>90	8 / 15 / 20 / 30 / 40 / 50 / 55	2700	640 / 1200 / 1800 / 2400 / 3200 / 4000 / 4400	Black / White
>90	8 / 15 / 20 / 30 / 40 / 50 / 55	3000	680 / 1275 / 1700 / 2550 / 3400 / 4250 / 4675	Black / White
>90	8 / 15 / 20 / 30 / 40 / 50 / 55	4000	720 / 1350 / 1800 / 2700 / 3600 / 4500 / 4950	Black / White
>90	8 / 15 / 20 / 30 / 40 / 50 / 55	5000	760 / 1425 / 1900 / 2850 / 3800 / 4750 / 5225	Black / White

> Model/Colors

Available in White & Black.

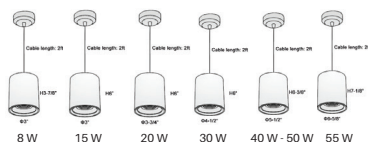


> Application Areas

Pendant Light For Indoor Applications.
Guest Room, Restaurant, Meeting Room,
Club, Hall, Hotel Entrance



> Technical Drawing





> Beam Spread



Medium	20°	Flood	40°
ft	0	ft	0
3.0	1.41	3.0	2.03
9.0	4.22	9.0	6.09
15.0	7.04	15.0	10.15

Note: Product available in other Kelvin temperatures on request.



Cross Reference Guide



Track Lights



IKIO	Other Brand	
Amplic Track Light		
		
Wattage	20 W	20 W
Lumen Output	1900 lm	1200 lm

IKIO	Other Brand	
Omate Track Light		
		
Wattage	30 W	30 W
Lumen Output	2450 lm	1600 lm



IKIO	Other Brand	
Optik Track Light		
		
Wattage	15 W / 20 W	20 W
Lumen Output	2100 lm / 3150 lm	1500 lm

IKIO	Other Brand	
Rimin Track Light		
		
Wattage	20 W / 30 W	30 W
Lumen Output	1900 lm / 2850 lm	1700 lm

IKIO	Other Brand	
Trang Track Light		
		
Wattage	15 W / 20 W / 30 W	25 W
Lumen Output	1350 lm / 1800 lm / 2700 lm	1200 lm



IKIO	Other Brand	
Prime Track Light		
		
Wattage	20 W	20 W
Lumen Output	2000 lm	1400 lm



IKIO	Other Brand	
Bolide Track Light		
		
Wattage	30 W	25 W
Lumen Output	3150 lm	1200 lm

IKIO	Other Brand	
Avis Track Light		
		
Wattage	28 W / 36 W	36 W
Lumen Output	2996 lm / 3852 lm	1800 lm



Cross Reference Guide


Down Lights



IKIO	Other Brand	
Lucent Downlight 		
Wattage	25 W / 28 W / 30 W	30 W
Lumen Output	2500 lm / 2800 lm / 3200 lm	2500 lm



IKIO	Other Brand	
Scrawn Downlight 		
Wattage	25 W / 30 W	30 W
Lumen Output	4600 lm / 5520 lm	3000 lm



IKIO	Other Brand	
Glim Downlight 		
Wattage	30 W / 40 W / 50 W	50 W
Lumen Output	3150 lm / 4200 lm / 5250 lm	3500 lm

IKIO	Other Brand	
Lumos Downlight 		
Wattage	12 W / 15 W / 20 W	20 W
Lumen Output	1080 lm / 1350 lm / 1800 lm	1400 lm

IKIO	Other Brand	
Odin Downlight 		
Wattage	24 W / 40 W / 60 W	40 W
Lumen Output	2160 lm / 3600 lm / 5400 lm	3000 lm

IKIO	Other Brand	
Pistone Downlight 		
Wattage	40 W / 50 W / 55 W	50 W
Lumen Output	3800 lm / 4750 lm / 5225 lm	3000 lm

IKIO	Other Brand	
Avant Downlight 		
Wattage	8 W / 15 W / 25 W	25 W
Lumen Output	840 lm / 1575 lm / 2625 lm	1500 lm

IKIO	Other Brand	
Cubra Downlight 		
Wattage	20 W / 30 W	30 W
Lumen Output	1900 lm / 2850 lm	2000 lm

Know More About IKIO

IKIO is one of the fastest-growing LED brands in America with a successful track record of being a reliable and trusted LED lighting partner. IKIO combines innovative ideas, expertise & advanced technology to create cutting-edge LED solutions that are changing the landscape of the lighting industry. We are ideally positioned to offer the right solutions for all your lighting requirements because of our holistic approach and vertically integrated infrastructure.

1



America's **top 500 fastest-growing companies** as per Inc 5000.

2



Headquartered in Indianapolis, Indiana: a strategic location capable of catering to all across US.

3



An expansive collection of **over 1000 DLC qualified products**.

4



Serving **Commercial, Industrial, Hazardous Locations, as well as Horticulture Applications**.

5

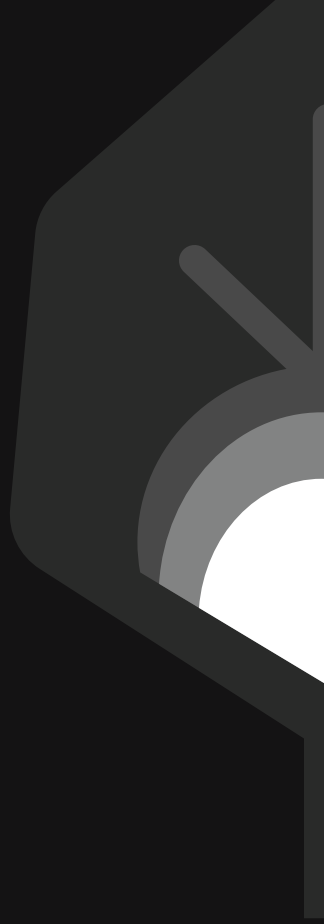


6 World class vertically integrated manufacturing facilities in different countries.

6



Existing clients — **H&M, Adidas, Hilton, Reebok, etc.**





(1) 844-533-4546 | www.retail.ikioledlighting.com
8470 Allison Pointe Blvd, Suite 128 Indianapolis, IN 46250